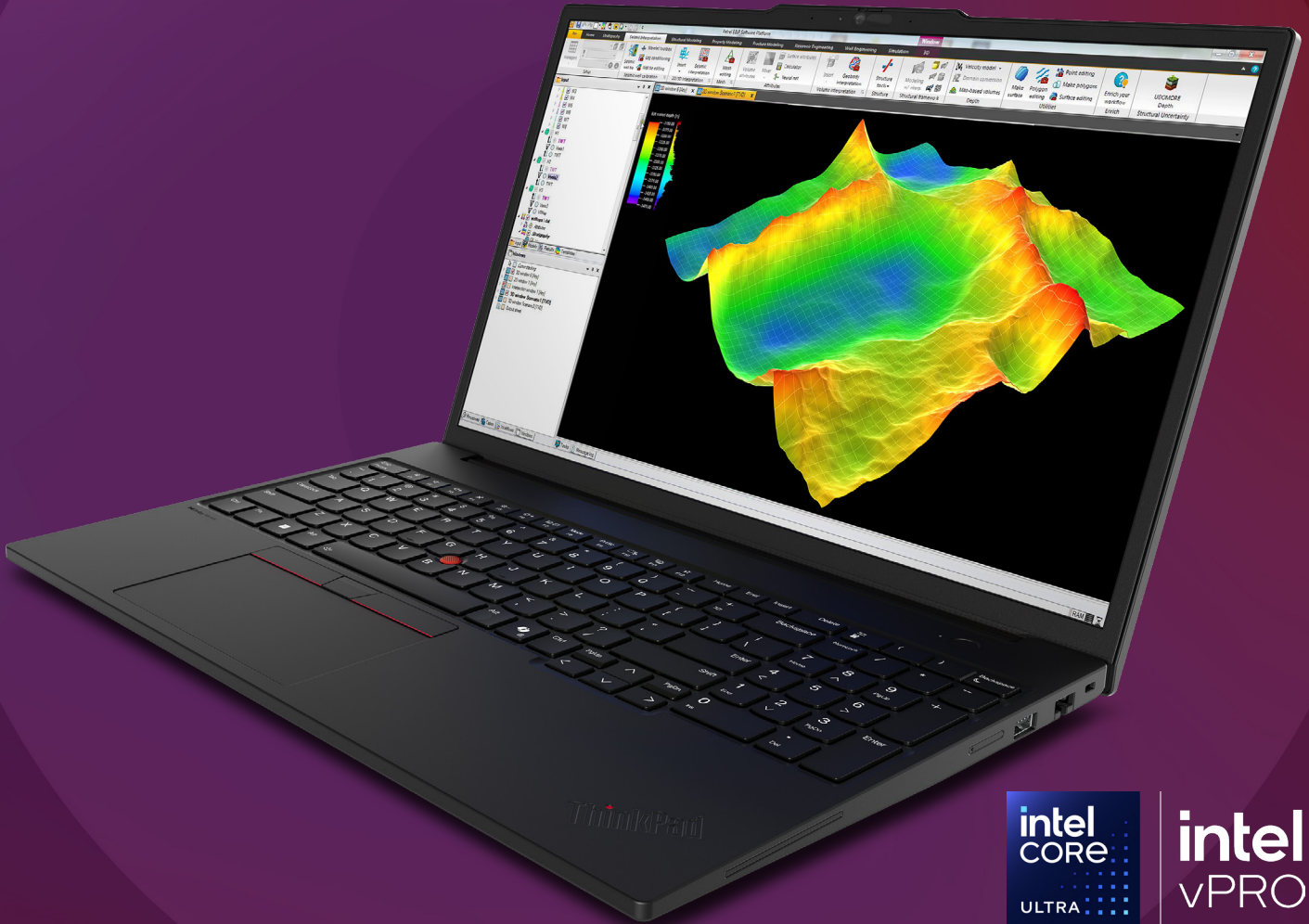


Lenovo
ThinkPad

Lenovo ThinkPad P16s / Gen 4
Mobility Without Compromise

Lenovo



intel
vPRO

That's the power of Intel Inside®

The Lenovo ThinkPad P16s *i* brilliantly blends reliable performance, sustainability, and portability—all packed into a sleek and lightweight 16-inch chassis. This workstation is AI-ready, featuring the latest Intel® Core™ Ultra processors (Series 2) with Intel vPro® technology and an integrated Neural Processing Unit (NPU) for efficiently running AI tasks. For more complex AI workflows, the P16s *i* boasts support for professional-level graphics options, including the NVIDIA RTX PRO™ 1000 Blackwell Generation Laptop GPU. An ideal solution for on-the-go workloads, it empowers designers, engineers, and students to be creative anytime, anywhere.

Processor:

5.4GHz
16 Cores

Intel Core Ultra Processors (Series 2)

Graphics:

NVIDIA RTX PRO
1000 Blackwell

High-performance professional graphics and AI acceleration

Memory:

96GB
DDR5

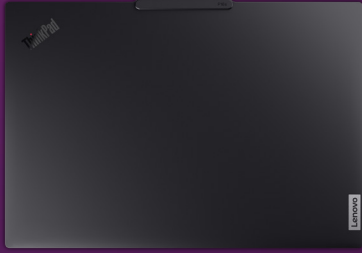
6400MT/s¹

AI:

539
TOPS

CPU package: up to 99 TOPS
GPU: up to 440 TOPS
Total: up to 539 TOPS

Features



Ultra-lightweight Design
Starting at only 1.82kg (4.01lbs) for highly mobile power users.



16" 16:10 Display
Three high quality options to suit your budget.



Accelerate Creativity with AI
Optimized for machine learning and generative AI workflows, empowering creators to build, iterate, and innovate faster.



Reliable Wireless Connectivity
Intel Wi-Fi 7 (5G) delivers enhanced bandwidth and reduced latency for seamless streaming, gaming, and productivity.

Lenovo ThinkPad P16s / Gen 4 Product Specifications[^]

Performance

Processor

Intel Core Ultra Processors (Series 2)
H-Series (up to 16 cores, up to 5.4GHz)[^]

Graphics

Discrete: up to NVIDIA RTX PRO 1000
Blackwell Generation Laptop GPU (8GB)
Integrated: Intel Graphics

AI

CPU: up to 9 TOPS
NPU: 13 TOPS
iGPU: up to 77 TOPS
GPU: up to 440 TOPS
Total: up to 539 TOPS

Total Memory¹

Up to 96GB DDR5 6400MT/s[^]

Memory DIMM Capacity

16GB / 32GB SoDIMM
32GB / 48GB CSoDIMM
2 Slots

Total Storage

Up to 2TB NVMe PCIe[®] Gen5 SSD
1 Drive

Camera

5MP RGB Camera with ThinkPad
Webcam Privacy Shutter
5MP RGB + IR with ThinkPad Webcam
Privacy Shutter and Human Presence
Detection

Battery

57Whr
75Whr

Power Supply

100W Slim AC Adapter Type-C

Display

16" 16:10 Display

WQUXGA (UHD+) (3840x2400)

- OLED, 400nit, 100% DCI-P3, Add On
Film Touch, Anti-Glare, X-Rite FCC,
Anti-Reflective/Anti-Smudge, Dolby
Vision™, Low Blue Light, TÜV Eyesafe[®]

WUXGA (FHD+) (1920 x 1200)

- IPS, Touch, 500nit, 100% sRGB,
AICCP, Anti-Glare, Low Blue Light,
TÜV Eyesafe
- IPS, 400nit, 45% NTSC, Anti-Glare,
TÜV Eyesafe

Connectivity

Ports

(2) USB-A (5Gbps)*, 1 Always On
(2) USB-C[®] (Thunderbolt™ 4)
(1) HDMI 2.1 TMDS[^]
(1) Mic/Headphone Combo Jack
(1) RJ-45 Gigabit Ethernet
(1) NanoSIM
(1) Smart Card Reader²

Wireless Connectivity

Intel BE201 Wi-Fi 7 2*2BE+BT5.x
non-vPro on Board WLAN +
Bluetooth[®] 5.4³

Intel BE201 Wi-Fi 7 2*2BE+BT5.x
vPro on Board WLAN +
Bluetooth 5.4³

Quectel EM160R-GL Gen2 4G CAT16
with eSIM²

Design

Dimensions (WxDxH)

(mm): 361.50 x 248.60 x 12.6 (front) / 18.17 (rear)
(inches): 14.24 x 9.79 x 0.49 (front) / 0.71 (rear)

Weight

Starting at 1.82kg / 4.01lbs

Keyboard

ThinkPad Backlit with Numeric Keypad

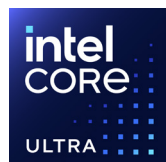
¹ Memory spec frequency listed; system support frequency may vary by configuration

² Optional

³ Bluetooth may be limited by OS

[^] For a full list of configuration details please visit:
<https://psref.lenovo.com>

* USB port transfer speeds are approximate and depend on many factors, such as processing capability of host/peripheral devices, file attributes, system configuration and operating environments; actual speeds will vary and may be less than expected.



intel
vPRO

That's the power of Intel Inside[®]

Lenovo

Lenovo Options & Accessories



ThinkVision P24QD-40 Display



ThinkPad Thunderbolt 5 Smartdock 7500



Lenovo Business Casual 17-inch Backpack



Scan for system overview, supported components, and technical specifications.

For a full list of accessories and options, please visit: accsmartfind.lenovo.com

For more details on ThinkStation and ThinkPad, please visit: lenovo.com/workstations

Visit us on social media: [#lenovoworkstations](https://twitter.com/lenovoworkstations)



September 2025 ©Lenovo. All rights reserved. Lenovo is not responsible for photographic or typographic errors. Lenovo makes no representation or warranty regarding third-party products or services. LENOVO, ThinkStation, and ThinkPad are trademarks of Lenovo.

Lenovo ThinkPad P16s / Gen 4 General Specifications[^]

Software

Operating System

Windows 11 Pro
Windows 11 Home
Ubuntu[®] Linux^{®1}
Red Hat[®] Enterprise Linux^{®2}

Windows Preloads

Lenovo Commercial Vantage

Additional Features

Ultra Performance Mode
Self Healing BIOS

ISV Certifications

Including Adobe[®], Altair[®], ANSYS[®], Autodesk[®], AVID[®], Bentley[®], Dassault[®], Nemetschek[®], PTC[®], Siemens[®], Barco[®]

For a complete list of ISV certifications visit <https://thinkworkstations.com/>

Security

Intel vPro security
ThinkShield
dTPM 2.0
Touch Fingerprint Reader
ThinkPad Webcam Privacy Shutter
Kensington Lock Slot

Sustainability

Materials

50% Recycled Aluminum A Cover
90% Recycled Magnesium Aluminum C Cover
50% Recycled Aluminum D Cover
90% PCC Plastic Slim 100W AC Adapter
Low Temperature Solder³
Plastic free packaging with 90% recycled and/or FSC certified content^{4,5}

Certifications

EPEAT^{®6,7} Gold
ENERGY STAR^{®7}
RoHS Compliant
TCO 10.0

Recommended Services

Lenovo's Premier Support Plus

delivers advanced anywhere, anytime seamless support with AI-powered, proactive and preventative services. Also includes Accidental Damage Protection, extended battery warranty (for eligible devices) and Keep Your Drive. You'll minimize downtime, boost productivity, enhance the experience, and free up in-house IT resources from break/fix maintenance.

Warranty Extensions & Upgrades

Lenovo offers a range of warranty upgrades to suit your business needs, such as next business day upgrades. Warranty extensions allow you to control your device budget, protect your investment and potentially lower the cost of ownership over time.

Lenovo's Asset Recovery Services

(ARS) enables secure destruction of data, helps reduce e-waste, and offers a fair market value for your end-of-life IT assets. The service also supports equipment from any manufacturer including PCs & tablets, monitors, servers, phones, printers, copiers and networking equipment.

Lenovo CO₂ Offset Service

makes offsetting carbon emissions simple and within the control of the customer. We offset the carbon emissions across the average lifecycle associated with each of our devices by providing the option at point of purchase. These offsets help support climate action projects verified by United Nations, Gold Standard[®], and Climate Action Reserve.

1 Select versions available via preload

2 Red Hat Enterprise Linux select versions certified

3 SSD, fingerprint reader module

4 Product packaging shall contain, on average, a minimum total percentage of 90% by weight of any combination of the following materials: Recycled content, biobased plastic, non-wood biobased fiber material, and/or sustainably forested material

5 Standard / bulk

6 EPEAT registered where applicable. EPEAT registration varies by country. See www.epeat.net for registration status by country

7 Certification available on select models

[^] For a full list of configuration details please visit: <https://psref.lenovo.com>



That's the power of Intel Inside[®]

NVIDIA[®], and NVIDIA RTX PRO are trademarks and/or registered trademarks of NVIDIA Corporation in the U.S. and other countries. Intel, Intel vPro, Core, Arc, and Thunderbolt are trademarks of Intel Corporation or its subsidiaries. Linux is the registered trademark of Linus Torvalds in the U.S. and other countries. Ubuntu is a registered trademark of Canonical Ltd. Microsoft and Windows are registered trademarks of Microsoft Corporation. USB-C is a registered trademarks of USB Implementers Forum. Other company, product, and service names may be trademarks or service marks of others.

Lenovo